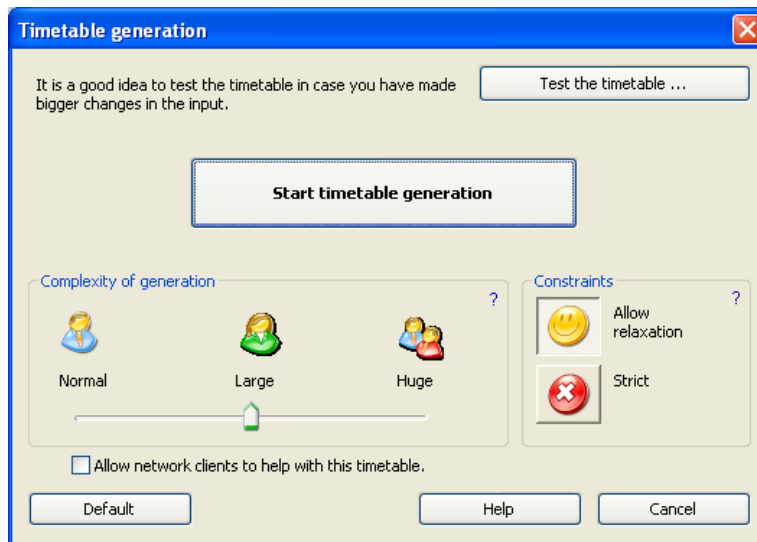


aSc TimeTables

What's new in version 2006

New type of generation

Before the generation of the timetable you can now choose if you want the computer to strictly follow your requirements and constraints or you allow the software to relax some of your conditions:

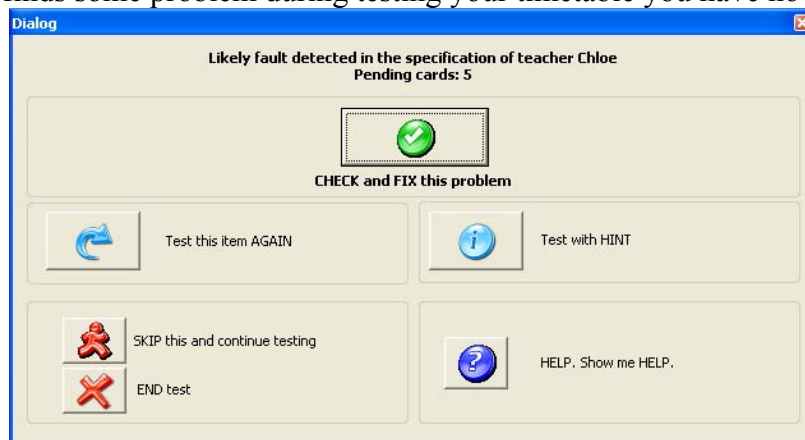


If you choose **strict** then the software will only accept the timetables that match your constraints.

If you choose **allow relaxation** then the software will be able to relax some of your constraints in case they will prevent generation of the timetable. This option is also great in helping you to identify some too hard constraints that you might have put on your timetable. If the algorithm constantly relaxes some constraints there is a big chance this constraint is not realistic and you shall adjust it.

New types of testing

If the software finds some problem during testing your timetable you have now more options:



You can try again, skip this part, check it manually or generate with hints. If you generate with hints the software will try if it is possible to generate that part of the timetable without some constraints. This is great in identifying mistakes in your inputted data.

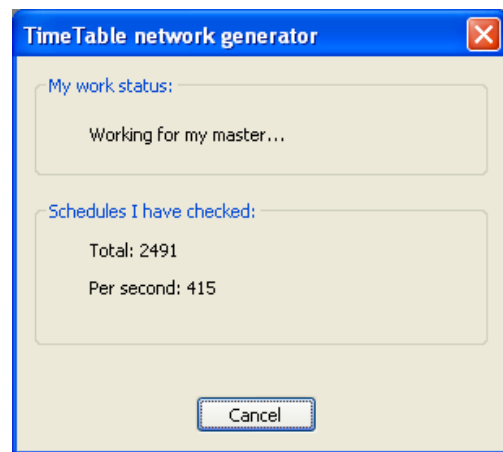
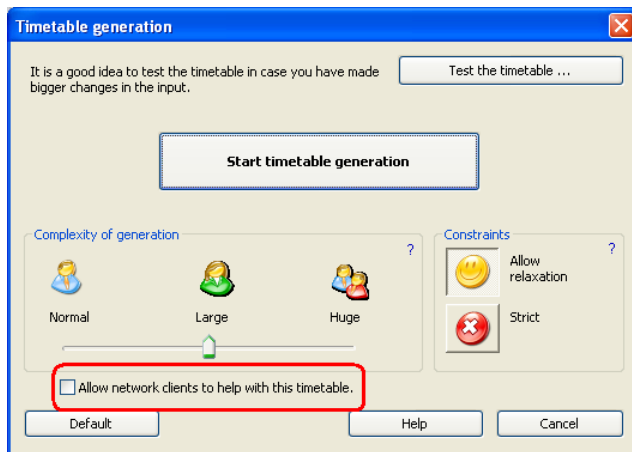
Multi computer generations

It is now possible to generate your timetable on two or more computers. This means that if you need your solution faster you can switch on some other computer in your network and this new one will help your computer to generate a timetable.

How to start generation on multiple computers:

It is quite simple. Before the generation tick the checkbox "Allow network clients to help with this timetable"

And on the other PC run through windows menu:
Start/Programs/aScTimeTables/Tools/Network client.



Notes:

- It is not a good idea to let more computers generate a timetable that has mistakes in the input or totally unrealistic constraints but if you are quite happy with your timetable (for example it was generated before and you have just added some new constraints) then more computers can help you reduce the time needed to finish the generation.
- Try to use computers with the same speed, much slower computer will do more noise than help and can even reduce total speed of generation.
- For many users normal generation on single PC will probably be just fine. If the generation is more than 30 minutes you can think about adding a new PC, but adding more than 2-3 PCs is probably not worth the noise and electricity consumed. For example adding second computer will increase the total speed by 70% compared to single computer, but by adding 5th computer you will increase speed only by 15% compared to speed of 4 computers.
- The multi-computer generation is also good for the future. New computers will have several computers hidden inside, so by switching on one PC you will in fact have 2 computers ready.

Timetable verification

The verification of the timetable is now more streamlined and explanation using help button is always near:

The screenshot shows the 'aSc Timetables 2005 BETA VERSION' software interface. The main window displays a timetable grid for a week, with columns representing days (Day 1 to Day 5) and rows representing teachers (Pa, Pe, Wi, Pr, Ra, Ri, Sa, St, Se, Su, Ti, Ve). The grid is color-coded by day. A 'Details' panel at the bottom left lists error messages:

- Mathematics (2 B Da 7 hour) Situated on the wrong position. (Subject: M)
- Biology (2 D Da 0 hour) Situated on the wrong position. (Subject: B)
- Form 2.B contains a window.
- Form 2.D contains a window.
- Teacher Samuel exceeded the number of windows allowed.

The interface also includes a menu bar (File, Edit, Specification, View, Timetable, Options, Window, Help) and a toolbar with various icons. The status bar at the bottom indicates 'Ready'.

New cardrelationships

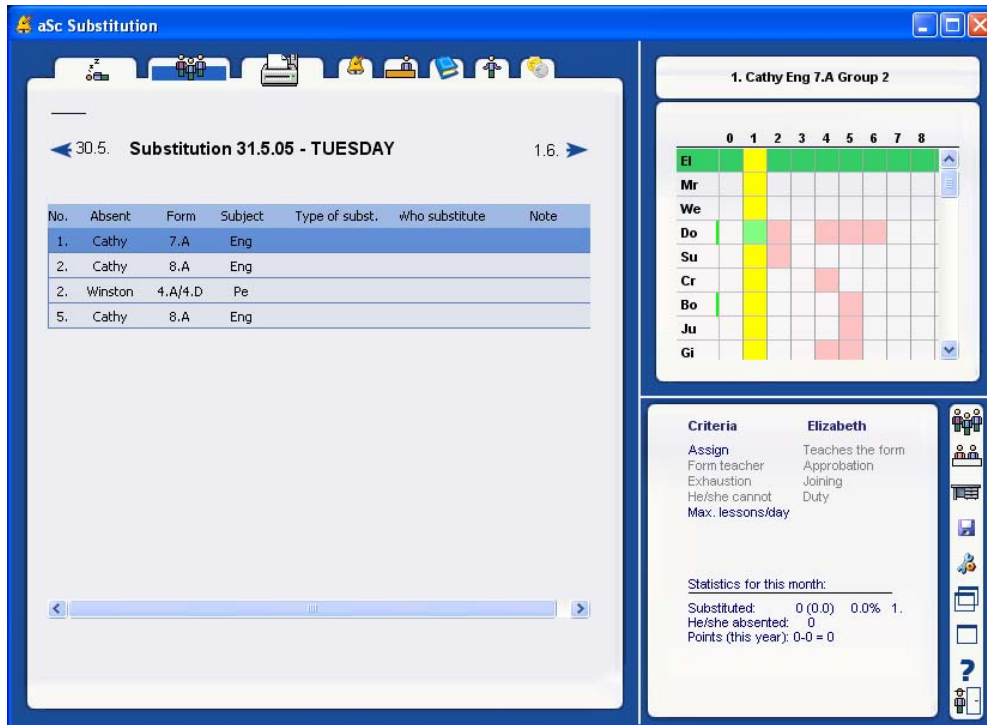
There are several new advanced card relationships that can help schools with special demands. You can set:

- *Max number of lessons on the same period per week*
- *Max consecutive periods of education on selected positions*
- *Max gaps per week/day on selected positions*
- *Minimal number of periods with education per day on selected positions*
- *Min/Max days with education on selected positions.*

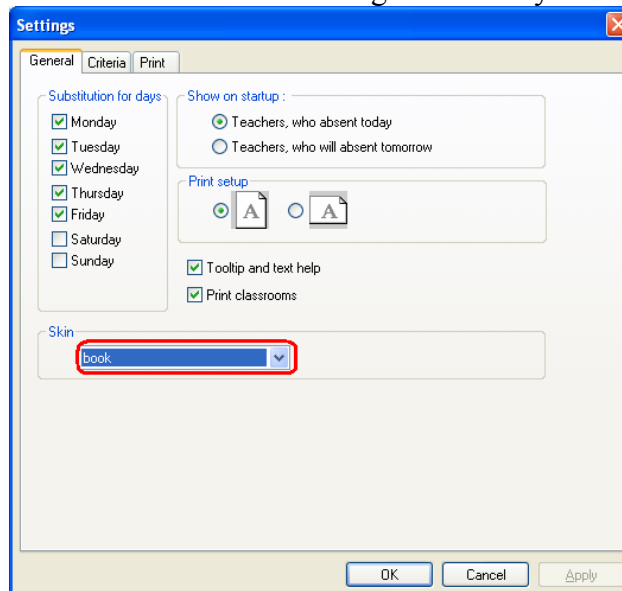
All these constraints can be applied for teachers, or forms.

aSc Substitution

aSc Substitution module got a new look. It can be full screen or run in window with any size on your screen:



It is also possible to change the look(skin) of the application. We have prepared some new looks for you to choose and more will follow during the school year:



Besides this bigger new features both aSc TimeTables and Substitution 2006 have many more smaller improvements. And more of them are still being added even while you read this document based on the feedback from all our users.

Thank you, aSc TimeTables team.