

aSc TimeTables 2003

New features

This document describes additions and changes made in version 2003.

1. Print functions

It is possible to customize the printouts of timetables. In the print preview mode you can press right mouse button on any part of the schedule. A dialog box appears where you can customize the print parameters of the selected part:

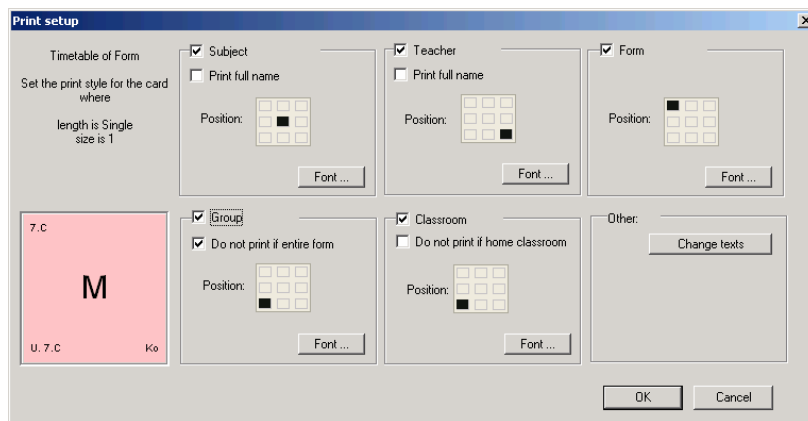
Right-click here to customize the font and size of the day name.

Right-click here to customize the font and size of lesson number and the lesson time. A dialog appears where you can define the position and size of these texts. You can also change the time interval text. The time interval text can also be multi-line.

Drag these two lines to change the size of title row or first column.

Right-click on any lesson to customize the lesson print layout.

Right-click on any lesson in the print preview and the following dialog appears:

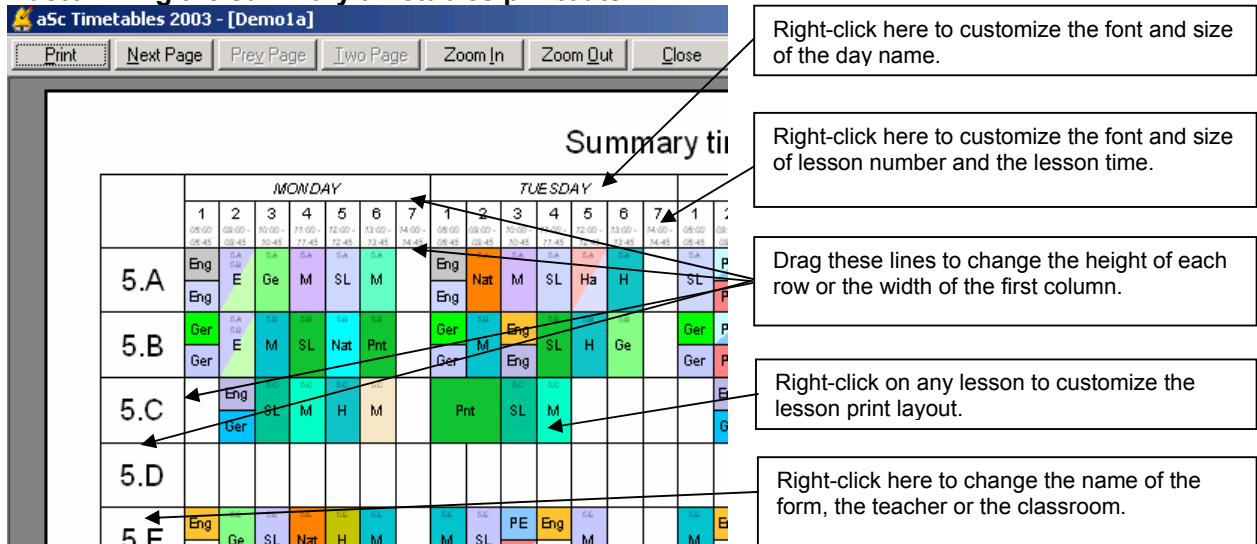


The text in the left top corner specifies which lessons you are changing. The layout is changed to all lessons identified by this text. For example you can change layout for all lessons in the timetables of forms where the length is single and the lesson is for entire form (size is 1). By clicking on other card you can specify the layout for e.g. all double lessons or for lessons that are for half of the students only.

For each lesson type you can specify if you want to print Subject, Teacher, Form, Group or Classroom. Simply click on the corresponding check box. For each text you can specify also the font and position. To specify a position simply click on the position control to choose in which part of the card the text shall be printed. To change the font click on the font button. Note that when specifying a size of the font you can either choose the size from a list or enter a size manually to specify sizes that are not in the list (e.g. small sizes like 2-7).

You can also change the lessons' texts. Click on the button 'Change texts'. Note that the texts are changed for each single lesson while the sizes and fonts are changed for all lessons of that type.

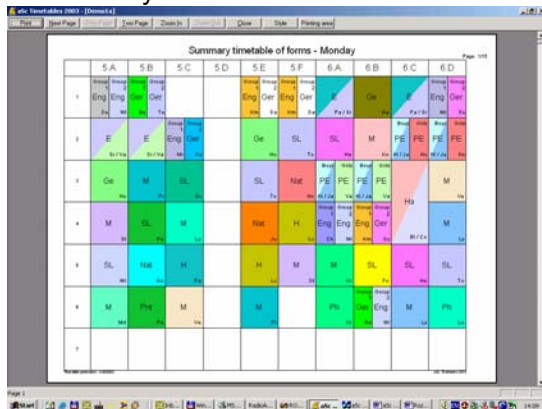
Customizing the summary timetables printouts:



Print summary timetables by day

In the print area there is a new option to change the printing of summary timetables. You can check the 'Per days' flag. This option will print the summary timetable for each day. In the Style dialog box you can also specify if the days and lessons are represented by columns or rows:

Days and lessons are in rows:



Days and lessons are in columns:



Reset to default print style

You can anytime reset the print layout to the defaults in the Customize dialog box: On the print preview toolbar press the button 'Customize' press then 'Default print styles' button.

2. Export to HTML

aSc TimeTables can publish the timetables using Macromedia Flash technology. The published timetables are identical to those you print on your printer. Your users can view, zoom and even print their timetable directly from the Internet browser:

The screenshot shows a web browser window titled "Timetable - Microsoft Internet Explorer". The address bar shows "C:\Rozvrhy\Export\index.html". The main content area displays a timetable for "8.C" at "Demo school" for the academic year "2001/2002". The timetable is a grid with days of the week (Mo-Fr) and periods (0-7). The subjects are color-coded and arranged as follows:

	0	1	2	3	4	5	6	7
Mo		Ge	M	Pnt	Eng	SL	H	
Tu		PE Er2 Boys	Ger Group 1	Soc	SL	M	Ch	
We		PE Er1	Rus Gr12 Group 2		Eng	Ph	Nat	
Th		E U. S.A.	SL	Eng	Ger Group 1	Ch	M	
Fr		PE Er2 Boys	M	SL	Ph	Nat	Eng	

Navigation buttons on the left include "Summary timetables", "Zoom in", "Zoom out", and "Print". The footer of the browser shows "Done" and "My Computer".

Macromedia Flash is already installed in most today's browsers. Even if the Flash is not present it is automatically downloaded from the Internet to the user's browser.

3. Customization of the substitution printouts

Similar to the customization of the printouts you can also customize all substitutions printouts. Below we will describe the customization of the daily substitutions printout, however the same method can be used to customize all other printouts.

Right-click on any text customizes the text font and size.

Click on the 'Columns' button to show the 'Columns dialog'. See the description below.

Teacher	Reason	Lesson	Subject	Form	Type	Substitutors	Signature
Henry	-	1	M	2.B			
	-	2	M	4.B			
	-	3	M	2.C			
Maria	-	2	Pp	2.D (Ph)			
	-	3	P	1.C			

Drag the blue lines to change the column width.

Columns dialog

Select which columns you want to display.

Set the display order of the columns.

Select the sorting order.

Specify if you want to group the rows with the same value.

Set the default layout of the substitutions printouts.

4. Substitution export to HTML

You can export the substitutions into HTML format. This export will use the settings from the printer printouts to determine which columns shall be printed and also the sorting order.

5. New advanced card relationships

You can now add two new card relationships using the buttons 'Advanced' in the 'Card relationship dialog'.

1. *Maximum number of days that have lesson on the marked positions.*
Using this card relationship you can e.g. specify that some teachers cannot have afternoon lessons more than two times in a week.
2. *There cannot be lesson in the A section AND in the B section on the same day.*
Using this method you can specify that if a teacher has a lesson in a certain form at a specified time than he/she cannot have lessons in another forms and times. For example you can mark lessons 1-5 in A section and lessons 6-9 in section B. Then you can specify that certain teacher cannot teach in A and B sections in all forms at the same time. Then the program will generate a schedule where this teacher is either teaching in the morning (1-5) or in the afternoon (6-9) in one day.

6. New card relationship

A new card relationship has been added. You can specify that for some subjects the groups from one form have to start their lessons at the same time. E.g. you can specify that Cooking lessons for girls have to be at the same time as Technical works for boys.

7. Import/Export from XML

The aSc TimeTables now features import/export from XML format. This enables easy integration of the aSc TimeTables software into the existing modules for school management.

8. Other

- Import from clipboard is now reporting what can be wrong with not imported lines.
- You can now input lessons that do not require any form. You can use this kind of lessons to schedule teachers' meeting or administrative work.
- Many small bug fixes and enhancements.